
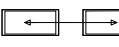
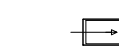
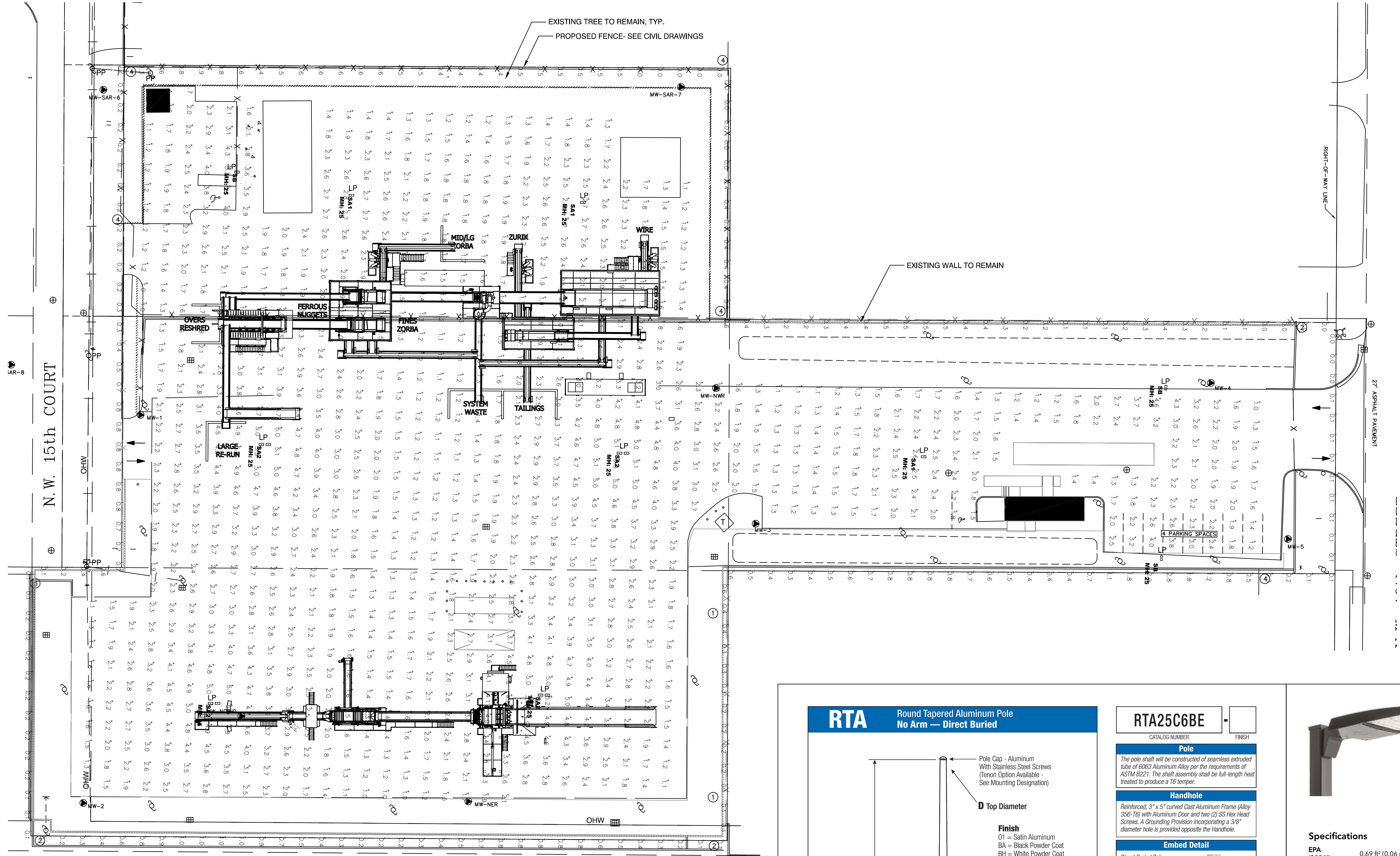


P:\19-0006 POMPANO SUN\19-0006 POMPANO SUN PHO.DWG 9/6/20 by JLL

Luminaire Schedule							
Project: LGL RECYCLING SUN 1 - SITE POMPANO BEACH, FL 12/03/2019							
Symbol	Qty	Label	Arrangement	Manufacturer	Description	Luminaire Lumens	LLF
	3	SA1	SINGLE	Lithonia Lighting	RSX2 LED P6 40K RS MH: POLE MOUNT A.F.G.	31069	0.903
	4	SA2	BACK-BACK	Lithonia Lighting	RSX2 LED P6 40K RS MH: POLE MOUNT A.F.G.	31069	0.903
	3	SB	SINGLE	Lithonia Lighting	RSX2 LED P2 40K RS MH: POLE MOUNT A.F.G.	17202	0.903

Calculation Summary							
Project: LGL RECYCLING SUN 1 - SITE POMPANO BEACH, FL 12/03/2019							
Label	Calc Type	Units	Avg	Max	Min	Avg/Min	Max/Min
PROPERTY LINE (5' above grade)	Illuminance	Fc	0.42	2.9	0.0	N.A.	N.A.
PARKING LOT	Illuminance	Fc	2.47	5.3	1.1	2.25	4.82
SITE	Illuminance	Fc	2.40	5.3	1.0	2.40	5.30

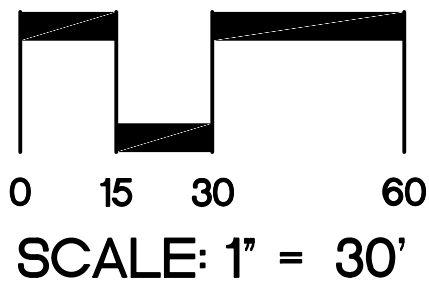
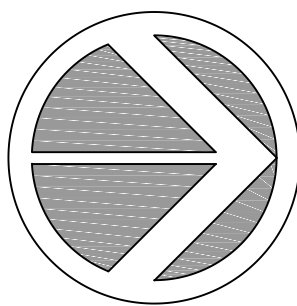


LEGAL DESCRIPTION

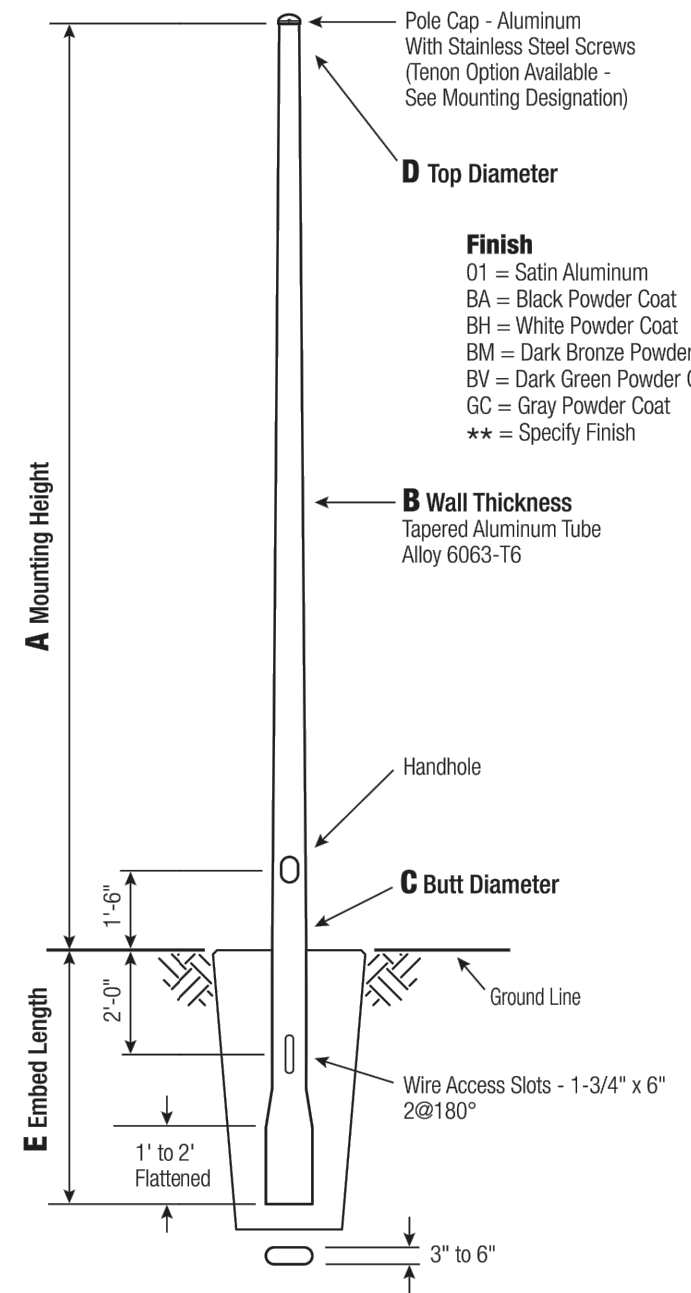
LOT 4, 7 AND 8 BLOCK 6 OF "POMPANO MANOR", ACCORDING TO THE PLAT THEREOF, AS RECORDED IN PLAT BOOK 22, AT PAGE 14 OF THE PUBLIC RECORDS OF BROWARD COUNTY, FLORIDA, LESS THE NORTH 15 FEET THEREOF FOR ROAD RIGHT-OF-WAY.

TOGETHER WITH:

LOT 6, BLOCK 6, THE WEST ONE-HALF OF VACATED N.W. 22ND AVENUE LYING EAST OF AND ADJACENT TO SAID LOT 6 AND THAT PORTION OF N.W. 15TH COURT LYING NORTH OF AND ADJACENT TO LOT 5, BLOCK 9, ALL IN "POMPANO MANOR", ACCORDING TO THE PLAT THEREOF, AS RECORDED IN PLAT BOOK 22, AT PAGE 14 OF THE PUBLIC RECORDS OF BROWARD COUNTY, FLORIDA.



RTA Round Tapered Aluminum Pole No Arm — Direct Buried



WARNING:

Do not install light pole without luminaire.

Satin Aluminum or Powder Coated Finish per Customer Specification.

A Min. Ht.	B Wall Thickness	C Butt Distance	Total Lum. Width	Maximum EPA					D Co. Holes	Custom Messes
25	0.156"	6	80	10.0	7.2	6.6	5.2	4.2	50-062	RTA25C6BE-*

B	D	E
4.5	Dimensions in inches	

CUSTOMER SPECIFICATIONS

CUSTOMER SPECIFICATIONS	LOCATION:
PROJECT NAME:	
NOTE:	QUANTITY:

RTA25C6BE Pole

Finish	RTA25C6BE
Catalog Number	RTA25C6BE
Pole	The pole shaft will be constructed of seamless extruded tube of 6063 Aluminum Alloy per the requirements of ASTM B221. The shaft assembly shall be full-length heat treated to produce a T6 temper.
Handhole	Reinforced, 3" x 5" curved Cast Aluminum Frame (Alloy 356-T6) with Aluminum Door and two (2) SS Hex Head Screws. A Grounding Provision incorporating a 3/8" diameter hole is provided opposite the Handhole.
Embed Detail	Direct Buried Pole bottom section on 6"± butt diameter pole will be partially flattened into an anti-rotational oval cross section. Wire access will be provided 24" below ground line. Soil conditions vary by site. Foundation requirements should be determined by a qualified Structural Engineer with knowledge of pile soil conditions.
Vibration Damper	When determined necessary by Hapro, a Vibration Damper will be factory-installed inside the pole shaft. Customer specification of the damper is available.
Mounting Designation	Side Drill Mount - For Side Drill Mount applications specify luminaire type, quantity and orientation. A luminaire drilling template must be supplied at time of order.
Tenon Mount - Welded or Spun	For Tenon Mount applications specify both Tenon diameter (2.375", 2.675", 3.125", etc.) and length (5", 6", etc.). Tenon style is factory option. Welded Tenon can be specified.

WARNING: Do not install light pole without luminaire.

SAFETY: The pole is a heavy object and should be handled with care. The pole should be stored in a dry, protected area. The pole should be used in accordance with the manufacturer's instructions.

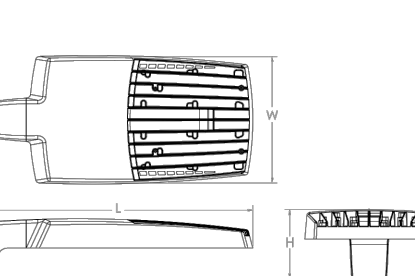
HAZARD: The pole is a heavy object and should be handled with care. The pole should be stored in a dry, protected area. The pole should be used in accordance with the manufacturer's instructions.

HAZARD: The pole is a heavy object and should be handled with care. The pole should be stored in a dry, protected area. The pole should be used in accordance with the manufacturer's instructions.



RSX2 LED Area Luminaire

EPA (ft²/ft²)	0.69 ft² (0.06 m²)
Length	29.3" (74.4 cm)
Width	13.4" (34.0 cm)
Height	3.0" (7.6 cm) Main Body
Weight (max)	39.0 lbs (17.7 kg)



Ordering Information					
EXAMPLE: RSX2 LED P6 40K RS MVOLT SPA DDBXD					
Series	Performance Package	Color Temperature	Distribution	Voltage	Mounting
RSX2 LED	P1	30K 3000K	R2	MVOLT (120V-277V)	SPA
	P2	40K 4000K	R3	MVOLT (347V-480V)	RPA
	P3	50K 5000K	R5	use specific voltage for options as noted	MA
	P4		R4		IS
	P5		R5		WBA
	P6		R5		WASC
			ARR		AASP
			ARR90		AARP
			ARR180		AARW
					AWSC

Options	Shipped Installed	Finish
H5	House side shield ¹	Dark Bronze
PE	Photocell, button style ^{1,2}	Black
PEX	Photocell external threaded, adjustable ^{1,2}	Natural Aluminum
PER3	Siren w/whistle lock receptacle only (no controls) ^{1,2,3,4}	White
CE34	Conduit entry 3/4" NPT (by 2)	Textured Dark Bronze
DF	Double fuse (208, 240, 480)	Textured Black
SPD20KV	20KV Surge pack (100V standard)	Textured Natural Aluminum
F40	Field adjustable output ^{1,2}	Textured White
DWG	0-10V dimming w/ pull up/down feature (for use with external control, ordered separately) ^{1,2}	
DS	Dual switching ^{1,2}	

LITHONIA LIGHTING COMMERCIAL OUTDOOR

One Lithonia Way • Conyers, Georgia 30012 • Phone: 800.705.7378 • www.acuitybrands.com

© 2011-2019 Acuity Brands Lighting, Inc. All rights reserved.

jbc planning & design
planning, landscape architecture & sustainable design
1312 Majesty Terrace • Weston, Florida 33327
(954) 802-6292 • www.jbcplanning.com

LGL RECYCLING - SUN 1
2241 NW 15TH CT
POMPANO BEACH, FL

Sheet Title
PHOTOMETRIC PLAN

Revision Dates

Date
SEPT 2020

Sheet Number
PHO-1

DRC

PZ20-12000009
3/3/2021

DRC

PZ20-12000009
11/18/2020